



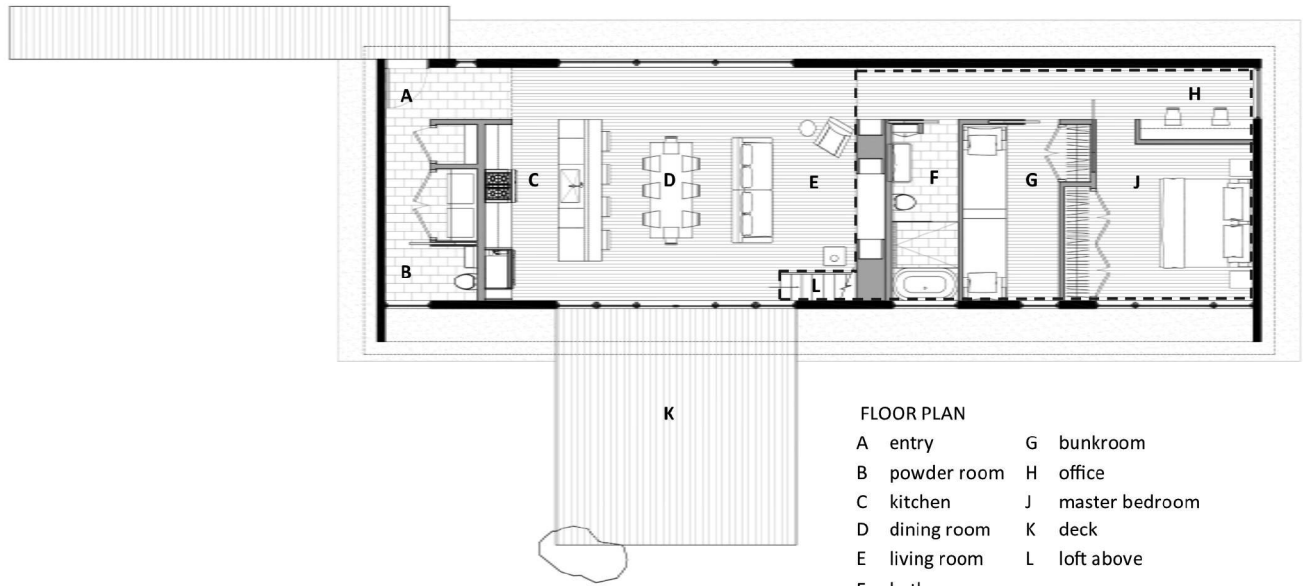
juniper cabin

SERIES

SUSTAINABLE NEW HOMES

The Juniper Series 2-Bedroom is the forefront of transitional living with eco-friendly materials and design. With a smaller footprint comes high quality finishes and details, inside and out. This 2 bedroom, 1.5 bath has 1,350 heated square feet on the main level and boasts a 350 square feet finished loft and deck. Passive and solar ready, the Juniper Series 2-bedroom home will create a beautiful synergy between the inside of your home and the great outdoors. It's perfect for a mountain retreat or for a small family home.





Two Bedroom

juniper cabin SERIES

interior features

- Vaulted ceiling with steel collar ties
- Open Living Floor Plan
- Morso Wood Stove
- Built in Reading Nook
- 3" Oak Hardwood Flooring
- Spray Foam Insulation in Roof
- 9' -0" Ceilings with 8' -0" Doors
- Customized Selections on Each Home

exterior features

- Boral Smooth Shiplap Siding
- Metal Clad Windows with Low-E and Sun Glass
- Classic Rib Metal Roo
- 2x6 Exterior Walls for Maximum Insulation
- Large Deck

specifications

- Transitional style home
- 1,350 heated square feet on main
plus 350 heated square feet finished loft
- 2 Bedrooms on main level, 1.5 Bathrooms
- Stainless steel kitchen appliances
- Energy Star Certified Home
- Utility Discounts Eligible
- Passive solar design and solar panel ready
- Bosch Inverter Ducted Split System
- Schluter radiant heat bathroom tile floor

SQUARE FOOTAGE 1,700 Total Heated

ARCHITECTURE + DESIGN BY:

RUEGER riley inc